



## MITCHAM - 108 BRUNSWICK ROAD

- Starting from: \$1,270,000
- Location: Mitcham, Melbourne, Australia
- Expected Completion: End 2023

Discover the perfect blend of charm and sophistication at 108 Brunswick Road in Mitcham. This beautifully presented property boasts a prime location, spacious interiors, and an array of luxurious features that make it the perfect place to call home.

As you enter the property, you'll be struck by the elegant living area, featuring large windows that let in an abundance of natural light. The modern kitchen is a chef's delight, complete with stone benchtops, quality stainless steel appliances, and ample storage space, perfect for preparing gourmet meals or hosting friends and family.

The four bedrooms are all generously sized, with the master suite offering a private retreat with a walk-in robe and a stunning ensuite. The other bedrooms feature built-in robes and share a central bathroom, offering convenience and comfort for the whole family.

Step outside and you'll be greeted by a beautiful landscaped garden, complete with a covered outdoor entertaining area, perfect for enjoying a morning coffee or hosting summer barbecues.

Located in a highly sought-after pocket of Mitcham, this property is just moments away from shops, cafes, parks and some of the best schools in the area. Plus, with easy access to public transport and major highways, getting around is a breeze.

Don't miss out on the opportunity to make this beautiful property your own. Contact us today to arrange a private inspection!

### Project Basics

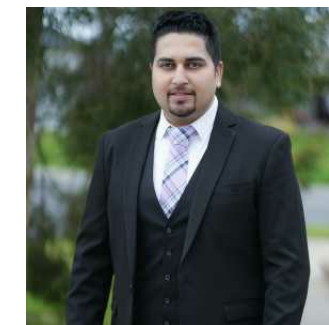
Type: Townhouse

Price Range: \$1,270,000 - \$1,270,000

Project Size: 3 units

Project Status: Off-the-plan

### Represented By



Rahul Malik

M7 Real Estate - Director

M: +61 0477013797

E: rahul@mseven.au

## MITCHAM - 108 BRUNSWICK ROAD



### Educations

Antonio Park Primary School	0.46 KM
TOP 12% ICSEA 1104	
Mullauna Secondary College	2.03 KM
TOP ICSEA	

### Transportations

Deep Creek Rd/Whitehorse Rd (Mitcham)	0.31 KM
Monomeeth Dr/Whitehorse Rd (Mitcham)	0.34 KM
Brunswick Rd/Reserve Ave (Mitcham)	0.51 KM
Berry Ave/Reserve Ave (Mitcham)	0.51 KM
Garden Ave/Reserve Ave (Mitcham)	0.58 KM

### Amenties

Plumbers' Supplies Co-OP	0.33 KM
Jacqueline's Coffee & Pastries	0.34 KM
BBQS-R-US	0.4 KM
BBQS-R-US	0.4 KM
Jairus	0.41 KM
K&M Trading	0.41 KM
Ground Cafe 619	0.43 KM
BSG Housewares	0.51 KM

### More Information



Scan QR code to access more renders, videos maps and to download project files.



Rahul Malik  
 Mobile: +61 0477013797  
 Email: rahul@mseven.au



# MITCHAM - 108 BRUNSWICK ROAD

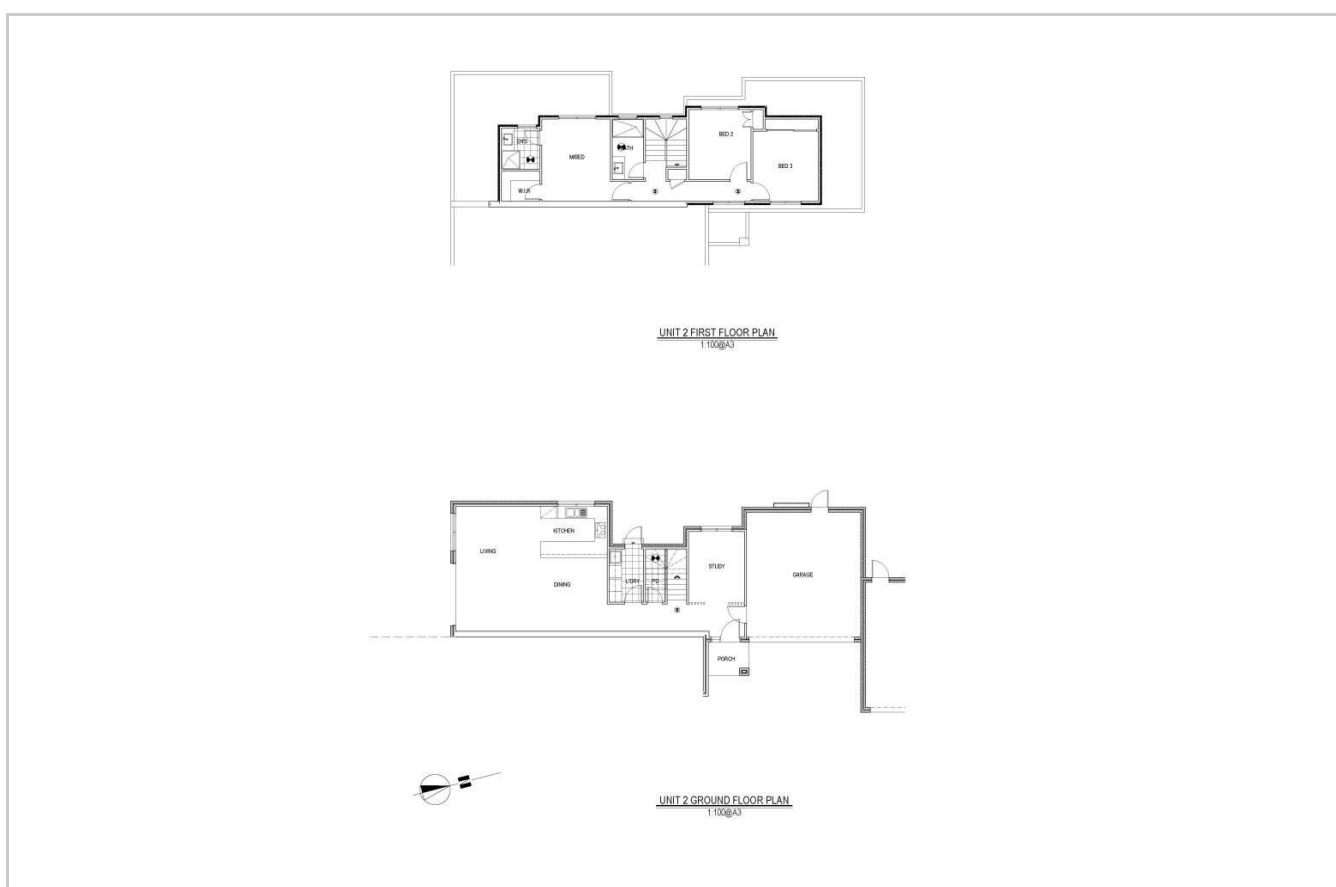


## More Information



Scan QR code to access more renders, videos maps and to download project files.

## Featured Units



Unit 2 4 2.5 2

Price: \$1,270,000 Type: Townhouse

Total Size: 188.65sqm

Internal: 188.65sqm



Unit 3 4 2.5 2

Price: \$1,270,000 Type: Townhouse

Total Size: 158.4sqm

Internal: 158.4sqm



Rahul Malik  
Mobile: +61 0477013797  
Email: rahul@mseven.au