



NUNAWADING - 119 ESDALE STREET

- ⑤ Starting from: \$1,150,000
- ⑤ Location: Nunawading, Melbourne, Australia
- ⑤ Expected Completion: Late 2023

PROPERTY FEATURES

Secure an exceptional residence in the heart of Nunawading! Modern architectural designed, with open plan living and dining rooms, four light filled bedrooms and a well-equipped kitchen.

Picture perfect location, it is guaranteed to award you with absolute convenience and boundless possibilities. Desirably located a stone's throw from Tunstall Park, bus services, a leisurely 750m to Nunawading train station, handy to Home HQ shopping precinct, well-regarded primary and secondary schools, Larch Street kindergarten, Blackburn Station Village, the Eastern Freeway/Eastlink, major shopping centres including Eastland, Westfield Doncaster and Box Hill Central.

Project Basics

Type: Townhouse

Price Range: \$1,150,000 - \$1,150,000

Project Size: 3 units

Project Status: Under Construction

Represented By



Rahul Malik

M7 Real Estate - Director

M: +61 0477013797

E: rahul@mseven.au

NUNAWADING - 119 ESDALE STREET



Educations

- Whitehorse Primary School** 0.95 KM
 TOP 15% ICSEA 1124
- Mullauna Secondary College** 1.42 KM
 TOP ICSEA



More Information



Scan QR code to access more renders, videos maps and to download project files.



Rahul Malik
Mobile: +61 0477013797
Email: rahul@mseven.au

NUNAWADING - 119 ESDALE STREET

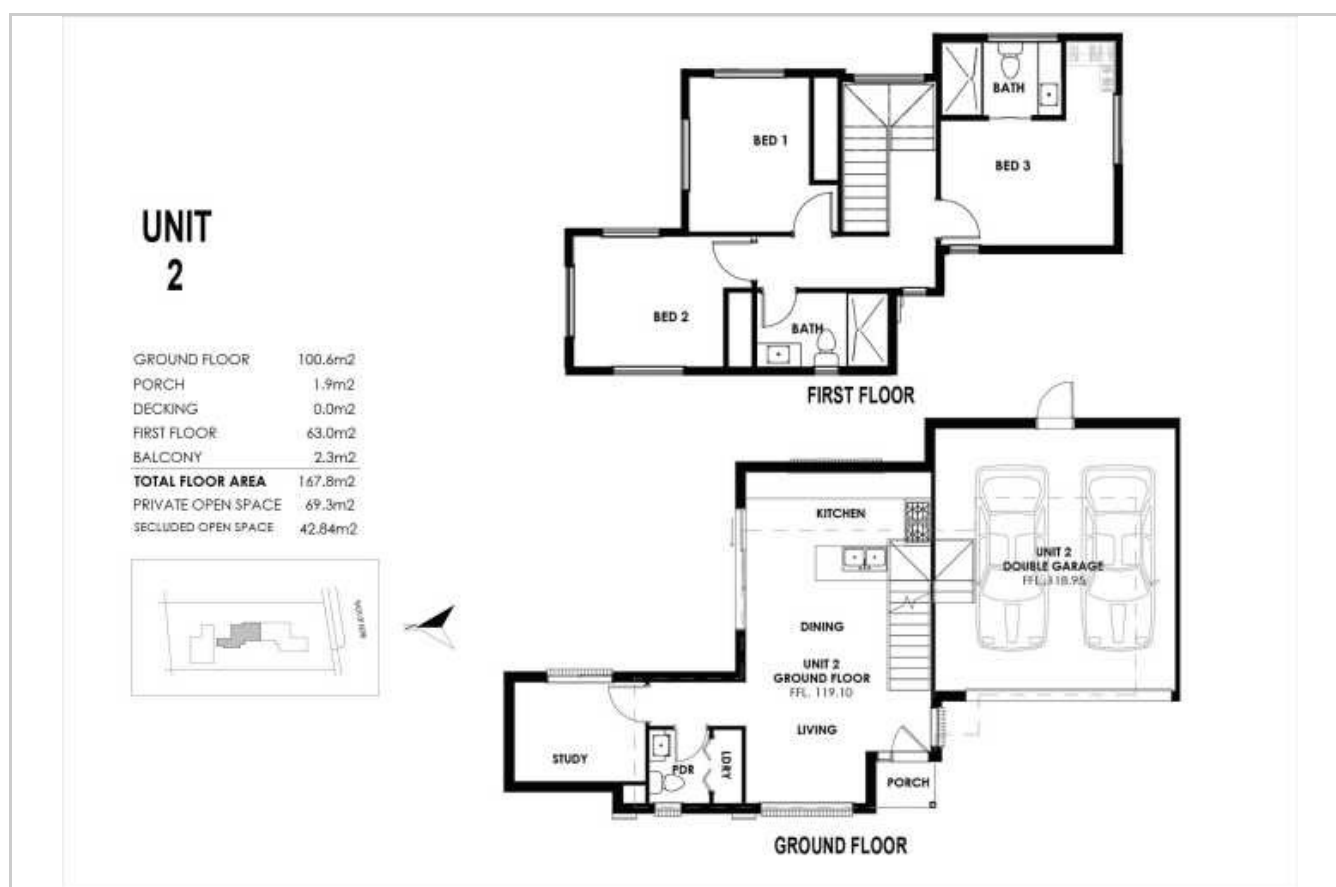


More Information



Scan QR code to access more renders, videos maps and to download project files.

Featured Units



Unit 2 3 2.5 2

Price: \$1,150,000 Type: Townhouse

Total Size: 343.8sqm

Internal: 167.8sqm External: 176sqm



Rahul Malik
 Mobile: +61 0477013797
 Email: rahul@mseven.au