



SPRINGVALE - 4/26 UNION GROVE

- ⑤ Starting from: \$630,000
- ⑤ Location: Springvale, Melbourne, Australia
- ⑤ Expected Completion: Contact us

Project Basics

Type: Townhouse
 Price Range: \$630,000 - \$630,000
 Project Size: Contact us
 Project Status: Completed

THE GREAT PLACE TO INVEST OR LIVE IN CENTRAL SPRINGVALE

Prepare to be enchanted from the moment you step through the door of this remarkable property. The open-plan living and dining area welcomes you with soaring ceilings, creating a sense of grandeur and spaciousness. Impeccably designed, this home sets the standard for excellence with its meticulous craftsmanship and top-quality inclusions. Treat yourself to a life of luxury and embrace the opportunity to make this extraordinary residence your own.

Nestled in the heart of Springvale, this home offers not only an exceptional living experience but also the potential for excellent rental returns. Take advantage of the central location, with Springvale train station, Library, and Shopping Centre just a short walk away, ensuring convenience is always at your fingertips.

Indulge in the following exquisite features of this remarkable property:

- Within walking distance of Springvale train station, Library, and Shopping Centre, providing effortless access to all your daily needs.
- Stay cozy and comfortable year-round with the split system air conditioning, allowing you to adjust the temperature to your liking.
- The high ceilings, tile floors, and abundant natural light throughout create an inviting ambiance and a sense of spaciousness.
- Two generously-sized bedrooms, adorned with plush carpeting, offer a peaceful sanctuary for relaxation.
- The main bedroom is complemented by full-length, built-in wardrobes, providing ample storage space and a touch of luxury.
- The well-appointed kitchen features stainless steel cooking appliances, a gas cooktop, and an electric oven, catering to your culinary desires.

Immerse yourself in a vibrant neighbourhood that boasts an array of amenities, all within easy reach. This charming residence offers contemporary open-plan living and is adorned with high-quality fixtures and fittings that exude modern elegance.

Don't miss the opportunity to call this delightful neighbourhood your own. Experience the epitome of luxury living and create lasting memories in your very own haven. Take action now to secure your

Represented By



Rahul Malik
 M7 Real Estate - Director
 M: +61 0477013797
 E: rahul@mseven.au

SPRINGVALE - 4/26 UNION GROVE



Educations

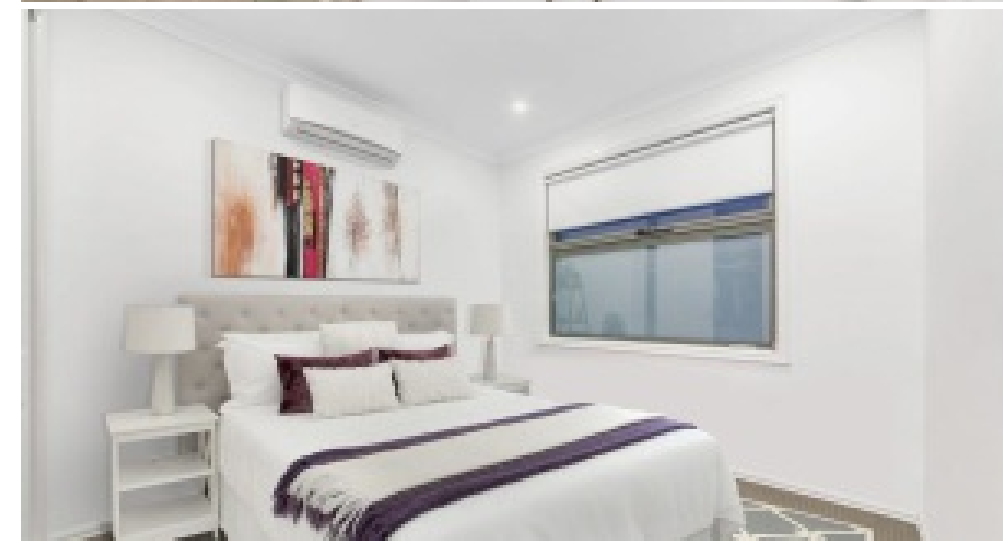
Springvale Rise Primary School	0.21 KM
<input type="button" value="TOP"/> <input type="button" value="ICSEA"/>	
Keysborough Secondary College	1.72 KM
<input type="button" value="TOP"/> <input type="button" value="ICSEA"/>	

Transportations

St James Ave/Springvale Rd (Springvale)	0.17 KM
Ash GR/Springvale Rd (Springvale)	0.19 KM
Elm GR/Lightwood Rd (Springvale)	0.24 KM
Springvale Central/Windsor Ave (Springvale)	0.28 KM
Lightwood Rd/View Rd (Springvale)	0.37 KM

Amenties

My Hoa Co.	0.17 KM
Greek Com Springvale	0.18 KM
Pearl Lingerie Australia	0.21 KM
Abe Mat Empire	0.21 KM
The Tran Springroll Restaurant	0.21 KM
Jessie's Pizza	0.21 KM
Pitta Pan Gourmet Kebabs	0.21 KM
Charcoal Chicken	0.21 KM



More Information



Scan QR code to access more renders, videos maps and to download project files.



Rahul Malik
 Mobile: +61 0477013797
 Email: rahul@mseven.au

SPRINGVALE - 4/26 UNION GROVE

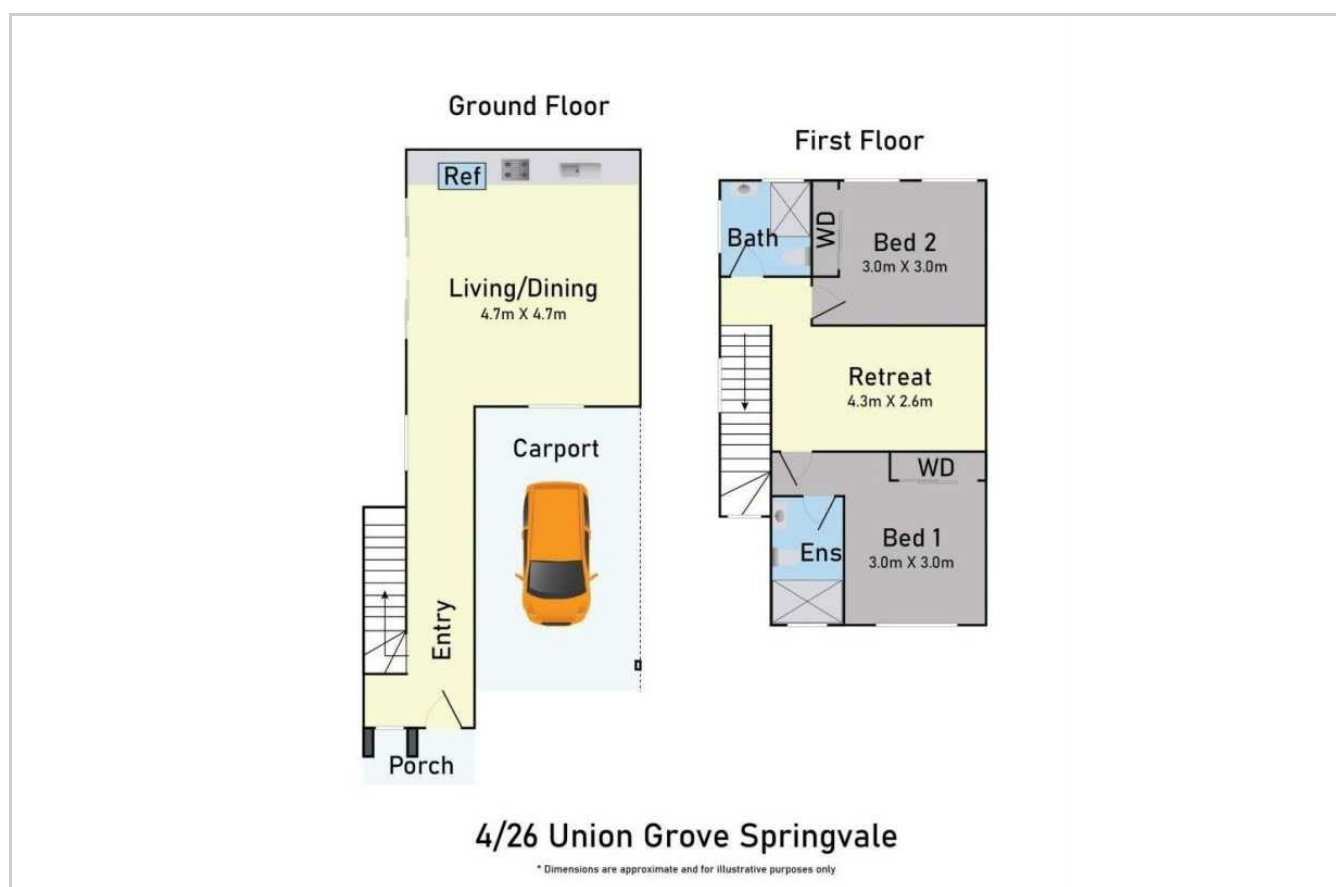


More Information



Scan QR code to access more renders, videos maps and to download project files.

Featured Units



Unit 4 2 2 1

Price: \$630,000 Type: Townhouse

Total Size: 200sqm

Internal: 92sqm External: 108sqm



Rahul Malik
Mobile: +61 0477013797
Email: rahul@mseven.au