



BENTLEIGH - 7-9 ST JAMES AVE

- ⑤ Starting from: \$1,980,000
- ⑤ Location: Bentleigh, Melbourne, Australia
- ⑤ Expected Completion: Q1 2024

Exquisite & Architecturally Designe

Designed to the highest calibre by leading architect Planar Arc, these state-of-the-art residences encapsulate everything Bentleigh is so widely celebrated for, while also bringing something unique to the suburb's architectural landscape.

Tailored for those with a penchant for luxury living, surround yourself with timeless quality, high end finishes, custom joinery and beautiful landscaped gardens - each residence is designed to balance beauty and function, emboldened by contemporary lines.

In line with their sublime faades, internally, the carefully considered spaces deliver a statement of exquisite architecture. Each unique 4 bedroom, 3 bathroom plus study interior exudes premium fixtures throughout vast open-plan living/dining and a showpiece kitchen flaunting illustrious stone surfaces, island bench with linear pendant light and mirror splashback.

Benefitting from a ground floor main bedroom with striking fully-tiled bathroom, upper-level retreat, private outdoor entertaining (most desirably north-facing) and double garage.

Where creativity comes to life, these visually appealing homes are located in the McKinnon Secondary and Valkstone Primary zones, around the corner from Centre Road shopping and cafes, metres to buses and within minutes of the train and community facilities.

Project Basics

Type: Townhouse

Price Range: \$1,980,000 - \$1,980,000

Project Size: Contact us

Project Status: Under Construction

Represented By



Rahul Malik

M7 Real Estate - Director

M: +61 0477013797

E: rahul@mseven.au

BENTLEIGH - 7-9 ST JAMES AVE



Educations

Valkstone Primary School	0.82 KM
TOP 9%	ICSEA 1143
McKinnon Secondary College	0.65 KM
TOP 11%	ICSEA 1121

Transportations

Greek Orthodox Church/Centre Rd (Bentleigh)	0.36 KM
McKinnon Secondary College/McKinnon Rd (McKinnon)	0.4 KM
Balmoral Ave/Centre Rd (Bentleigh)	0.41 KM
McKinnon Reserve/McKinnon Rd (McKinnon)	0.48 KM
Tucker Rd/McKinnon Rd (McKinnon)	0.49 KM

Amenties

Cucina A Isola	0.3 KM
Panebianco Accountants	0.44 KM
B & J Thomson	0.45 KM
Seven Stars Restaurant	0.47 KM
Gourmet Food Experts	0.48 KM
Gourmet Food Experts	0.48 KM
Wash 'n' Wear Uniforms	0.49 KM
Corporate Essential	0.49 KM

More Information



Scan QR code to access more renders, videos maps and to download project files.



Rahul Malik
 Mobile: +61 0477013797
 Email: rahul@mseven.au

BENTLEIGH - 7-9 ST JAMES AVE

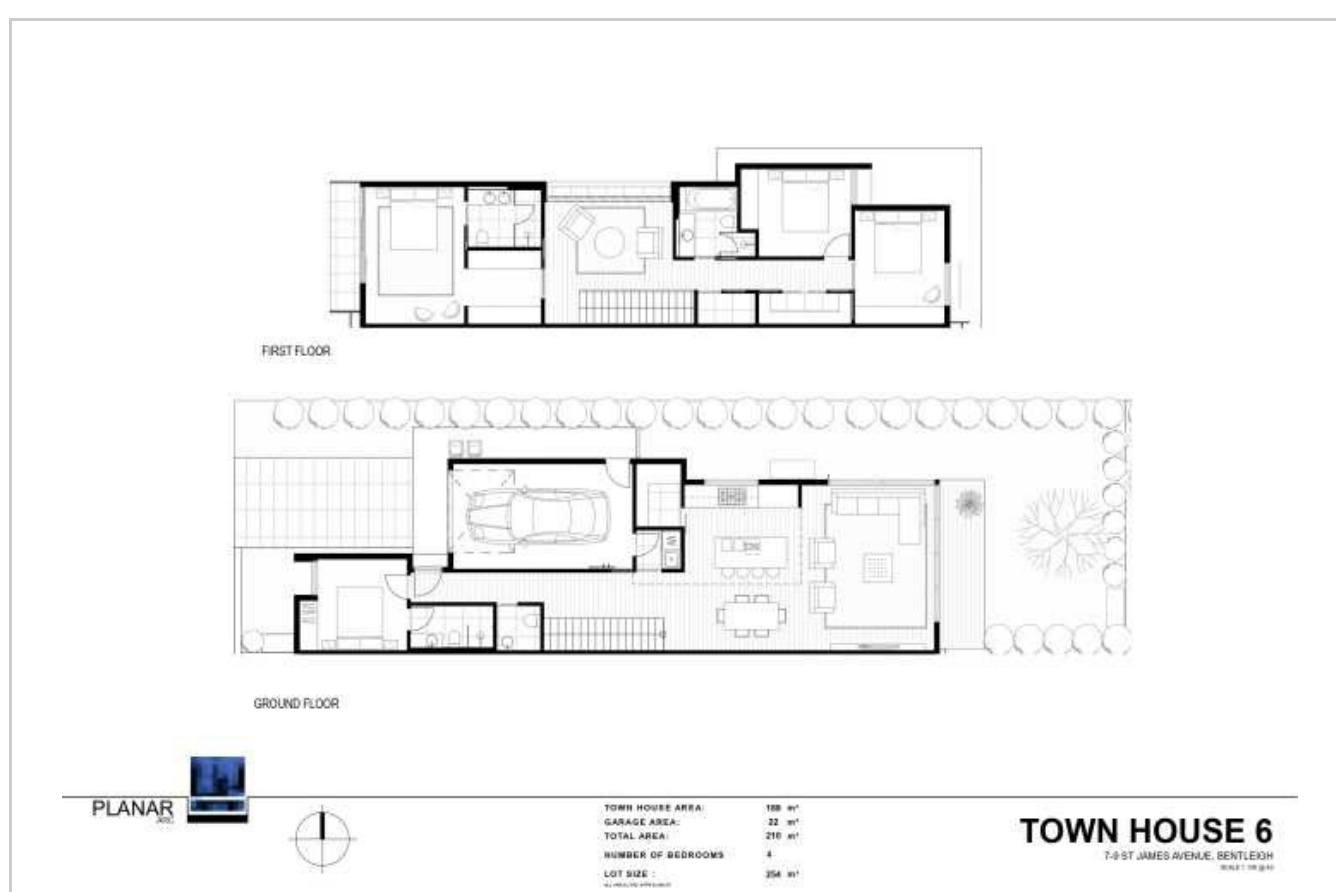


More Information



Scan QR code to access more renders, videos maps and to download project files.

Featured Units



Unit 6 4 3.5 1

Price: \$1,980,000 Type: Townhouse

Total Size: 464sqm

Internal: 210sqm External: 254sqm

